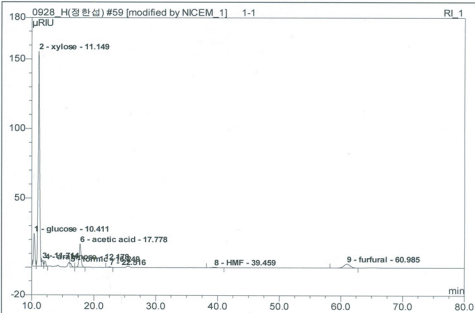


59 1-1

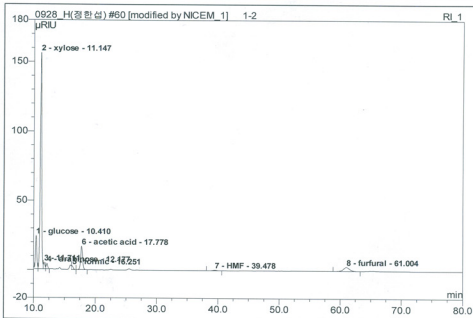
Sample Name:	1-1	Injection Volume:	10.0
Vial Number:	GD1	Channel:	RI_1
Sample Type:	unknown	Wavelength:	n.a.
Control Program:	H column(80min)	Bandwidth:	n.a.
Quantif. Method:	H column(RI)	Dilution Factor:	1.0000
Recording Time:	2012-10-04 18:46	Sample Weight:	1.0000
Run Time (min):	80.00	Sample Amount:	1.0000



No.	Ret.Time min	Peak Name	Height μRIU	Area μRIU*min	Rel.Area %	Amount ppm	Type
1	10.41	glucose	23.736	6.113	9.82	2019.990	M *
2	11.15	xylose	154.911	42.863	68.88	14934.530	M *
3	11.71	n.a.	4.490	1.218	1.96	n.a.	M *
4	12.18	arabinose	3.732	1.079	1.73	373.874	MB*
5	16.25	formic	2.678	0.789	1.27	1093.874	M *
6	17.78	acetic acid	16.885	6.178	9.93	4124.857	MB*
7	22.52	n.a.	0.360	0.175	0.28	n.a.	MB*
8	39.46	HMF	0.393	0.313	0.50	744.648	BMB*
9	60.98	furfural	2.830	3.499	5.62	1004.013	BMB*
Total:			210.014	62.226	100.00	24295.787	

60 1-2

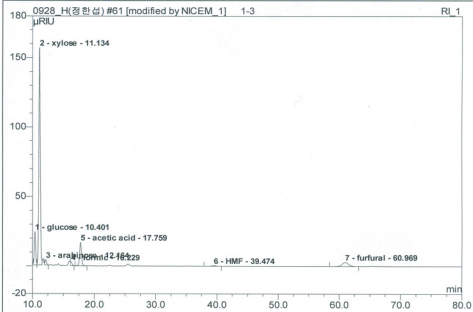
Sample Name:	1-2	Injection Volume:	10.0
Vial Number:	GD2	Channel:	RI_1
Sample Type:	unknown	Wavelength:	n.a.
Control Program:	H column(80min)	Bandwidth:	n.a.
Quantif. Method:	H column(RI)	Dilution Factor:	1.0000
Recording Time:	2012-10-04 20:07	Sample Weight:	1.0000
Run Time (min):	80.00	Sample Amount:	1.0000



No.	Ret.Time min	Peak Name	Height μRIU	Area μRIU*min	Rel.Area %	Amount ppm	Type
1	10.41	glucose	23.862	6.171	9.88	2039.354	M *
2	11.15	xylose	155.734	43.147	69.04	15033.752	M *
3	11.71	n.a.	4.526	1.233	1.97	n.a.	M *
4	12.18	arabinose	3.759	1.065	1.70	369.077	MB*
5	16.25	formic	2.699	0.825	1.32	1143.699	M *
6	17.78	acetic acid	16.895	6.205	9.93	4143.149	MB*
7	39.48	HMF	0.402	0.325	0.52	774.747	BMB*
8	61.00	furfural	2.836	3.520	5.63	1009.932	BM *
Total:			210.712	62.492	100.00	24513.710	

61 1-3

Sample Name:	1-3	Injection Volume:	10.0
Vial Number:	GD3	Channel:	RI_1
Sample Type:	unknown	Wavelength:	n.a.
Control Program:	H column(80min)	Bandwidth:	n.a.
Quantif. Method:	H column(RI)	Dilution Factor:	1.0000
Recording Time:	2012-09-29 20:37	Sample Weight:	1.0000
Run Time (min):	80.00	Sample Amount:	1.0000



No.	Ret.Time min	Peak Name	Height μRIU	Area μRIU*min	Rel.Area %	Amount ppm	Type
1	10.40	glucose	23.897	6.136	10.02	2027.734	M *
2	11.13	xylose	156.415	43.083	70.38	15011.461	M *
3	12.16	arabinose	3.717	1.070	1.75	370.780	MB*
4	16.23	formic	2.637	0.807	1.32	1118.892	MB*
5	17.76	acetic acid	16.943	6.183	10.10	4128.075	BMB*
6	39.47	HMF	0.403	0.333	0.54	794.301	BMB
7	60.97	furfural	2.899	3.605	5.89	1034.300	BMB
Total:			206.911	61.218	100.00	24485.543	